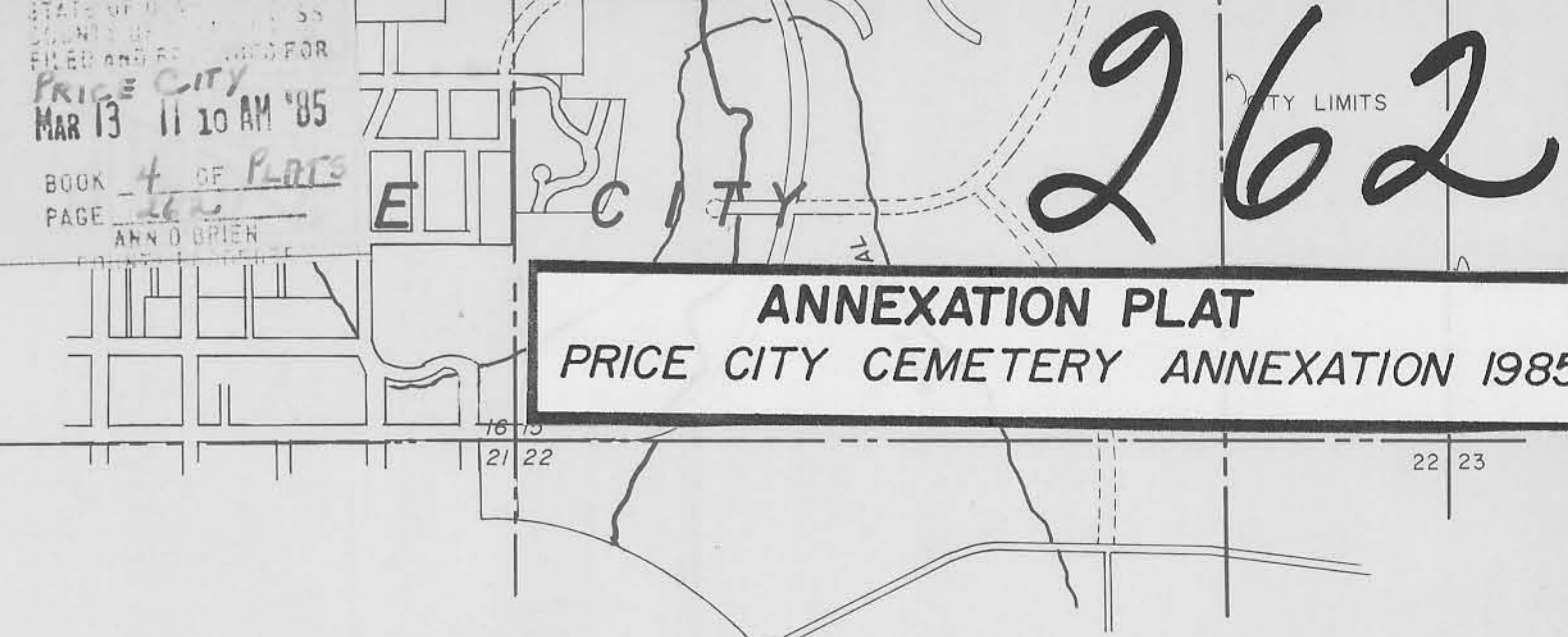


Price City Limits

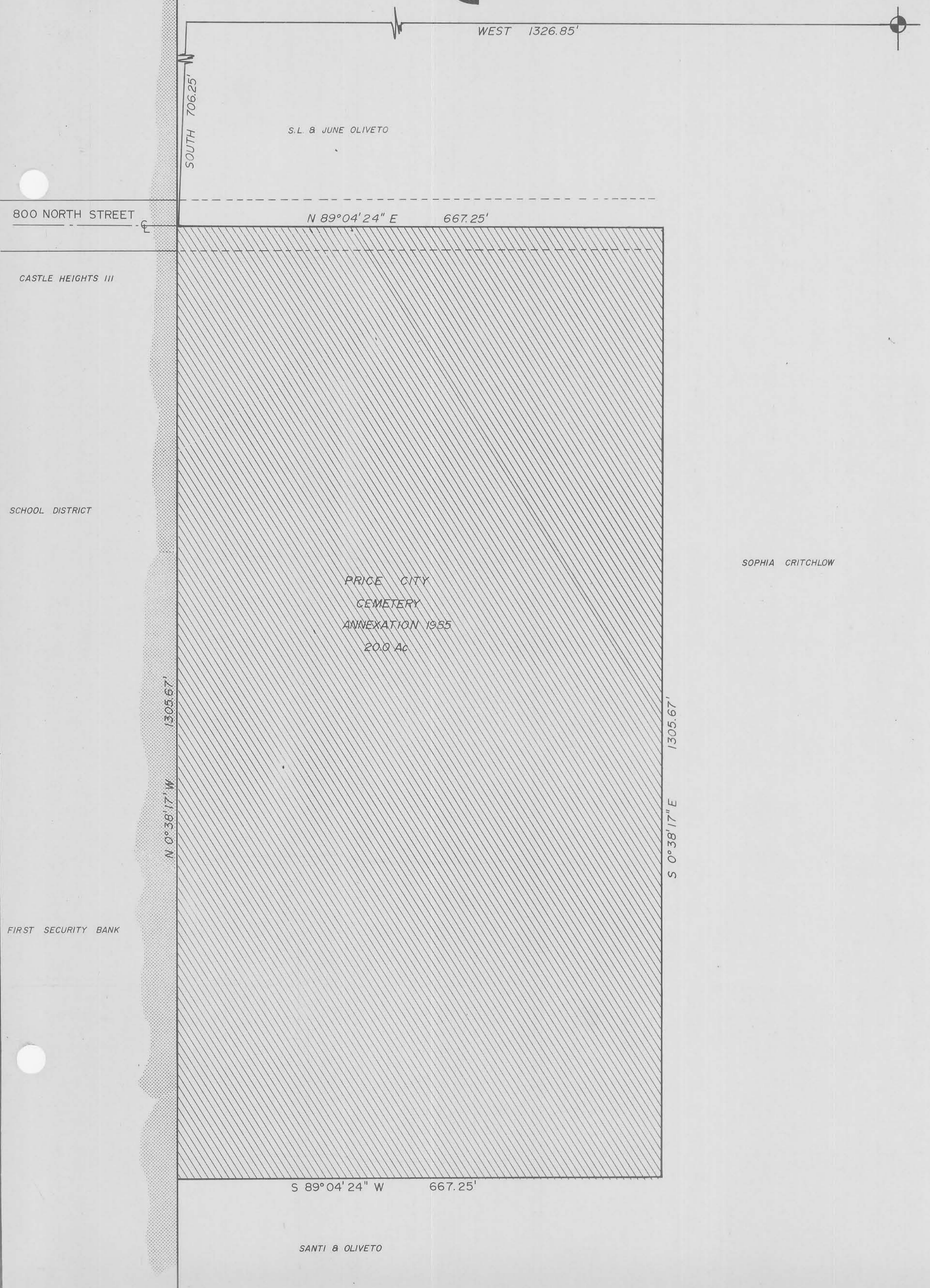
Northeast Corner (Brass Cap),  
Section 15, T14S, R10E, SLB & M.

Entry 007223  
Indexed  
Abstract  
Book



**ANNEXATION PLAT**  
PRICE CITY CEMETERY ANNEXATION 1985

**VICINITY MAP** SCALE 1" = 500'



**BOUNDARY DESCRIPTION**

COMMENCING AT A POINT WHICH IS LOCATED AT THE CENTERLINE OF 8th NORTH STREET AND THE EAST BOUNDARY OF CASTLE HEIGHTS SUBDIVISION, PLAT III, AS RECORDED ON PAGE 132, BOOK 3 OF PLATS, IN THE OFFICAL RECORDS OF CARBON COUNTY, SAID POINT IS ALSO LOCATED 706.25' FEET SOUTH AND 1326.85 FEET WEST FROM THE NORTHEAST CORNER OF SECTION 15, TOWNSHIP 14 SOUTH, RANGE 10 EAST.

SALT LAKE BASE AND MERIDIAN; THENCE AS FOLLOWS:

COURSE	DISTANCE	REMARKS
N 89°04'24" E	667.25'	ALONG THE EXTENSION OF THE CENTER LINE OF 8th NORTH ST.
S 0°38'17" E	1305.67'	
S 89°04'24" W	667.25'	
N 0°36'17" W	1305.67'	TO POINT OF BEGINNING. CONTAINING 20.00 ACRES, MORE OR LESS.
BASIS OF BEARING IS N 89°04'45" E, BETWEEN THE N1/4 CORNER AND THE NE CORNER OF SECTION 15, TOWNSHIP 14 SOUTH, RANGE 10 EAST, SALT LAKE BASE & MERIDIAN, AS SHOWN ON THE OFFICIAL PLATS IN THE OFFICE OF THE CARBON COUNTY SURVEYOR.		

1-8

**ANNEXATION PLAT**  
PRICE CITY CEMETERY ANNEXATION 1985

**RECORDED NO.**

STATE OF UTAH, COUNTY OF CARBON  
Recorded And Filed At The Request Of:  
PRICE CITY

DATE 2/13/85 TIME 11:10 BOOK 4 PAGE 262

FEE --- Ann O'Brien  
CARBON COUNTY RECORDER

**PRICE CITY PLANNING COMMISSION APPROVAL**

APPROVED THIS 7th DAY OF JANUARY 1985, A.D.

Nelson O. Smith  
CHAIRPERSON

**APPROVAL AS TO FORM**

APPROVED AS TO FORM THIS 13th DAY OF February 1985, A.D.

[Signature]  
CITY ATTORNEY

2/13/85  
DATE

**CITY ENGINEER**

I HEREBY CERTIFY PLAT EXAMINED BY IT IS CORRECT AND INFORMATION ON

[Signature]  
CITY ENGINEER

2/13/85  
DATE

